

# Godwin CD150S Dri-Prime® Pump



The Godwin CD150S Dri-Prime pump is a versatile, general purpose dewatering pump designed for use in the industry's most challenging construction, municipal, industrial and emergency response applications. This rugged pump is ideally suited for tough dewatering jobs, and is the reliable choice for rental solutions.

The CD150S is a member of the Godwin S Series of Smart pumps, which can be equipped with a new generation of Field Smart Technology (FST) for remote monitoring and control. In addition to improved hydraulic efficiency, greater fuel economy, and streamlined serviceability, the CD impeller is now interchangeable with a Flygt N-Technology non-clog impeller, providing the flexibility to tackle stringy, modern wastewater applications with the same pump.

## Specifications

Suction connection	150 mm (6 in) flange
Delivery connection	150 mm (6 in) flange
Max capacity	520 m <sup>3</sup> /hr (2290 USGPM) †
Max impeller diameter	301 mm (11.9 in)
Max operating temp	80°C (176 °F)*
Max working pressure	6.3 bar (91 psi)
Max suction pressure	4 bar (58 psi)
Max casing pressure	9.5 bar (138 psi)
Max operating speed	2200 rpm

\* Please contact our office for applications in excess of 80°C (176°F).

† Larger diameter pipes may be required for maximum flows.

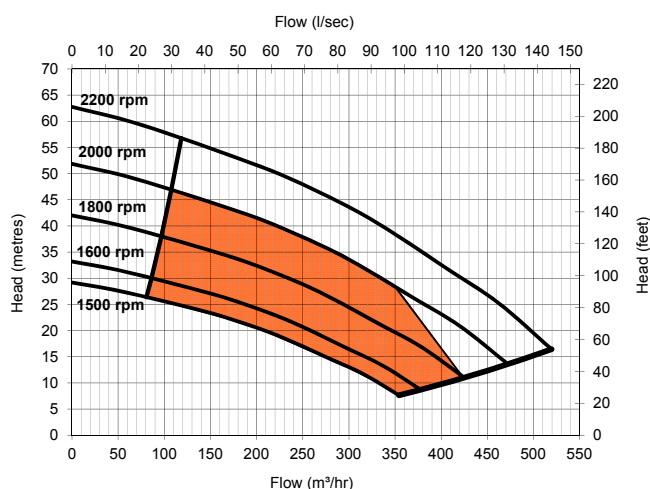
## Features and benefits

- Interchangeable impellers to tackle a full range of solids handling applications.
- Field Smart Technology (FST) allows the user to monitor & control the pump from anywhere in the world.
- New compressor belt tensioner reduces time to change and adjust belt to approximately 30 minutes.
- New sight glass and measuring stick added to monitor level and quality of mechanical seal oil.
- Improved hydraulic design reduces vibration, maximizes efficiency and fuel economy.
- Fully automatic priming from dry to 8.5 m (28 feet).
- Venturi priming requires no adjustment or control.
- Available as open set or Sound Attenuated Enclosure.
- Standard build engine Deutz TD 2.9 L4.
- Other engine options available.
- Environmentally friendly skid base contains all fluid spills.

# Godwin CD150S Dri-Prime® Pump

## Performance curve

Pump curve is based on 0ft (0m) dynamic suction lift.



## Suction lift table 1800 rpm

Performance data provided in tables is based on water tests at sea level and 20°C (68°F) ambient. All information is approximate and for general guidance only. Please contact the factory or office for further details.

Total suction Head (metre)	Total Delivery Head (metre)				
	9	13	17	21	25
	Output (m³/hr)				
3	421	389	346	299	259
4.6	407	374	328	284	241
6.1	396	356	310	266	212
7.6	382	324	284	241	187

## Open skid

Fuel capacity 315 L usable

Weight dry 1500 kg

Weight wet 1800 kg

Dimensions 2,500 (L) x 1,300 (W) x 1,900 (H)

## Sound attenuated enclosure

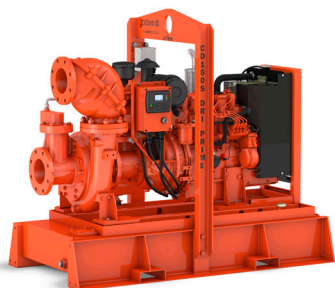
Noise @ 7m, 1800 rpm 66 dBA

Fuel capacity 275 L usable

Weight dry 2100 kg

Weight wet 2345 kg

Dimensions 2,470 (L) x 940 (W) x 1,860 (H)



## Materials

Pump casing	Cast Iron BS EN 1561/EN-JL1030
Wearplates	Cast Iron BS1561:1997
Pump shaft	Carbon steel BS970:1991 817M40T
Impeller	Cast Steel BS3100 A5 Hardness to 200 HB Brinell
Mechanical seal faces	Silicon carbide Vs Silicon carbide

## Engine

Engine Deutz TD 2.9 L4

Engine power 50 kW @ 2200rpm

Emissions EU stage 5

Fuel consumption @ 1800 rpm BEP 8.6 litres/hour

Please contact the factory or office for further details. A typical picture of the pump is shown. All information is approximate and for general guidance only.