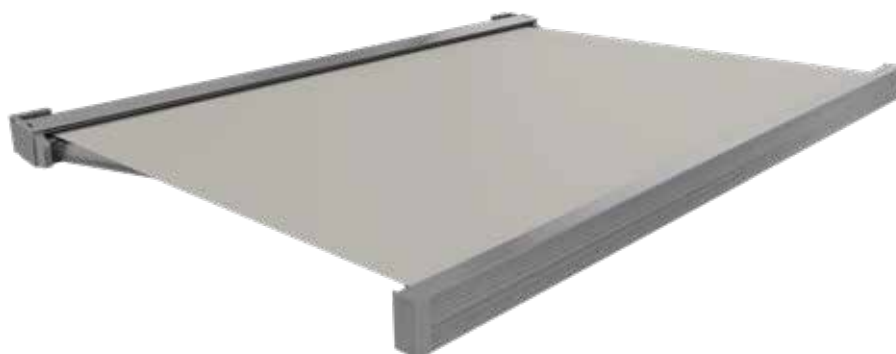




Average weight

**NEW
2026**

Total wall-mounted cassette awning



Motorized awning with a fully retractable cassette for perfect protection of the awning and frame, featuring a particularly compact design to minimize space requirements on low-height balconies.

Ceiling and wall mounting options available.

Aluminum side covers cover all hardware.

Micrometric tilt adjustment.

LED lights integrated into the arms.

OPTIONAL 6 W/m LED cassette.

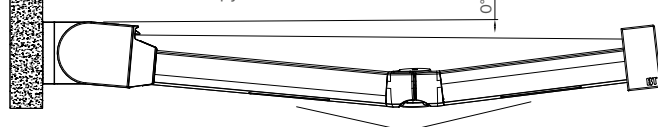
Registered design featuring a "stone" effect.

Awning suitable for balconies and condominium facilities.

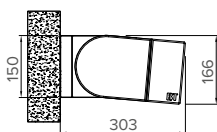
TECHNICAL DATA

WALL MOUNT

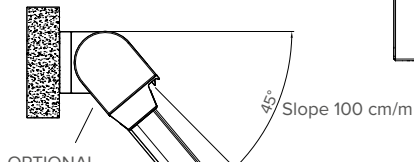
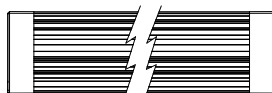
For projections greater than 3 meters, a minimum 5° canopy inclination is recommended.



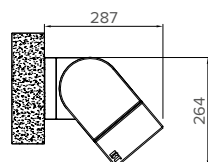
Patented arm with integrated lighting system



FRONT VIEW

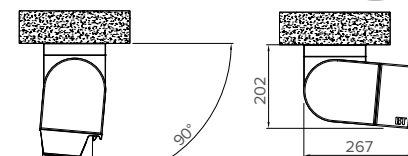
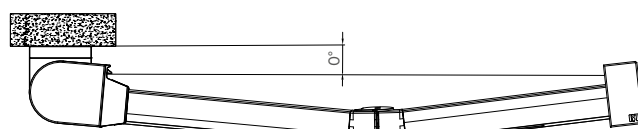


OPTIONAL LED in the cassette



CEILING MOUNT

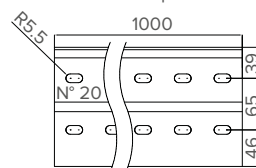
Dimensions expressed in mm



OPTIONAL

139-920
Extended wall plate

105-580
Cardan eyelet



095-910
Control unit/power supply carter

